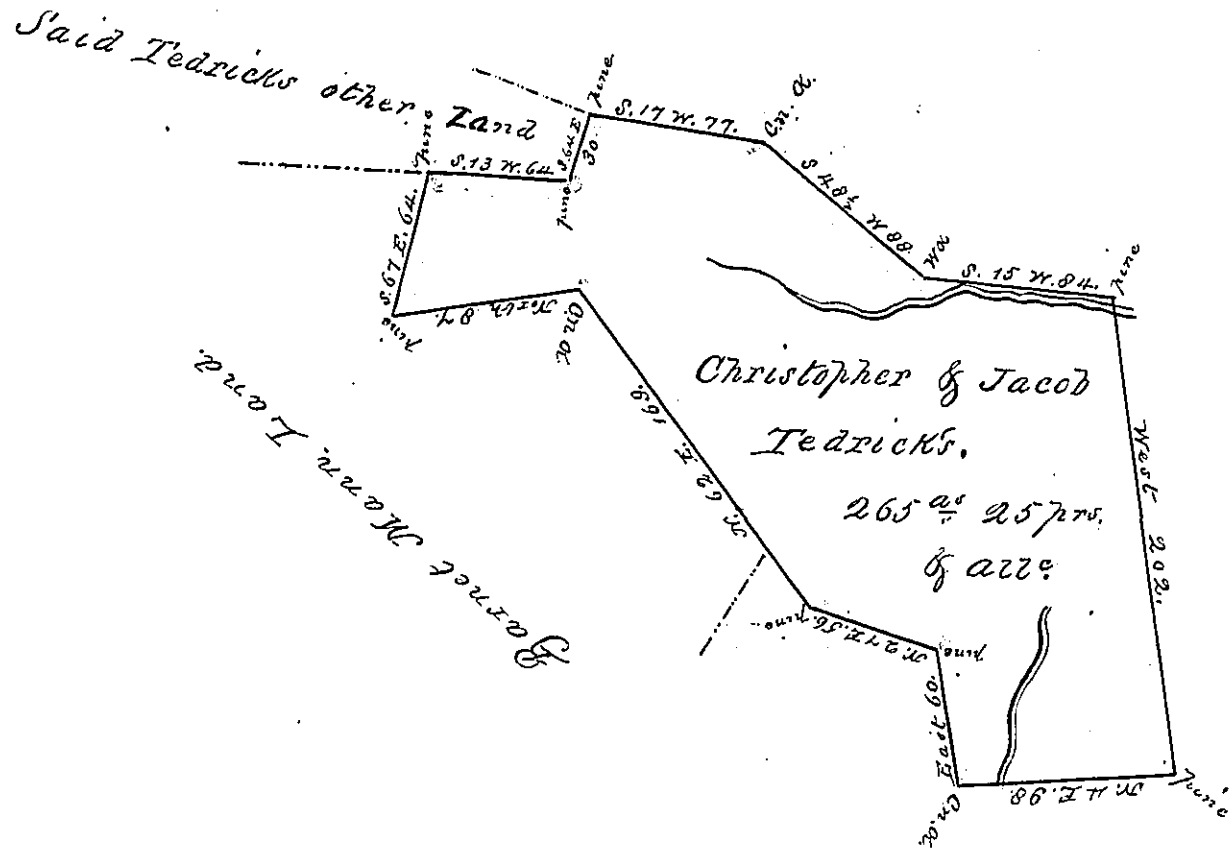


Top of Timber Ridge.



Near Benjamin Teadrick's Land

Situate on the waters of Jonoloway Creek in Bethel Township in the County of Bedford Containing Two hundred and Sixty five acres & Twenty five perches with the usual allowance of one per cent for Roads &c-

Surveyed for Christopher & Jacob Teadrick the 24th day of April 1793 In pursuance of a Warrant dated February 22nd 1793-

To Daniel Proshhead Esq. Sg.

George Woods Junr. S. D.

IN TESTIMONY that the above is a copy of the original remaining on file in the Department of Internal Affairs of Pennsylvania, made conformably to an Act of Assembly approved the 16th day of February, 1833, I have hereunto set my Hand and caused the Seal of said Department to be affixed at Harrisburg, this

Tenth day of July 1876

Wm. C. Candler
Secretary of Internal Affairs